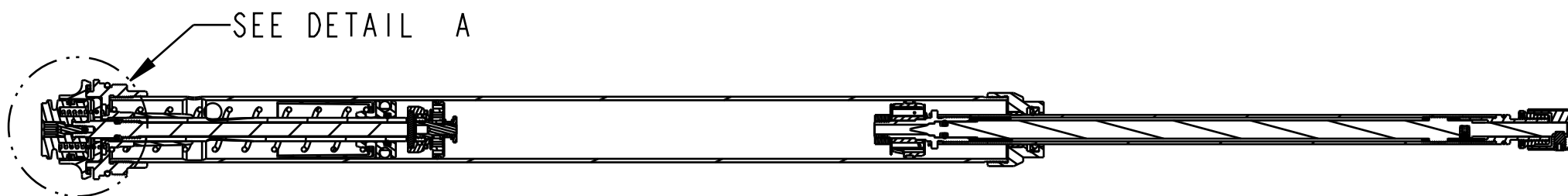


4

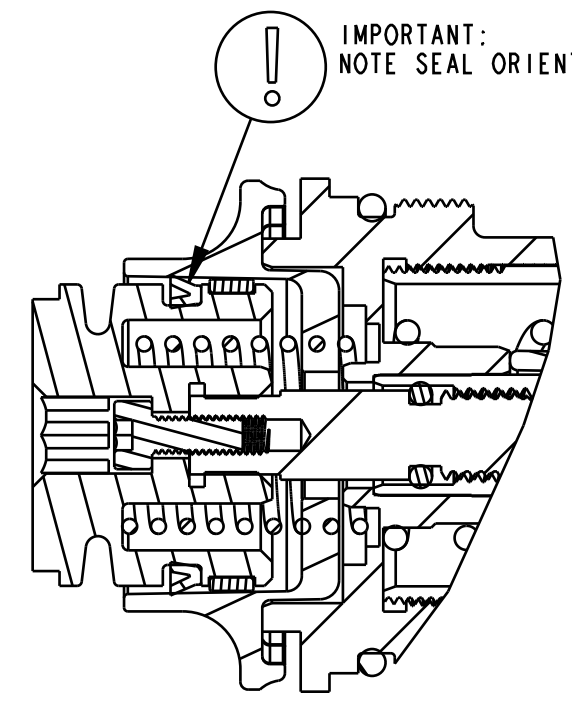
3

2

1

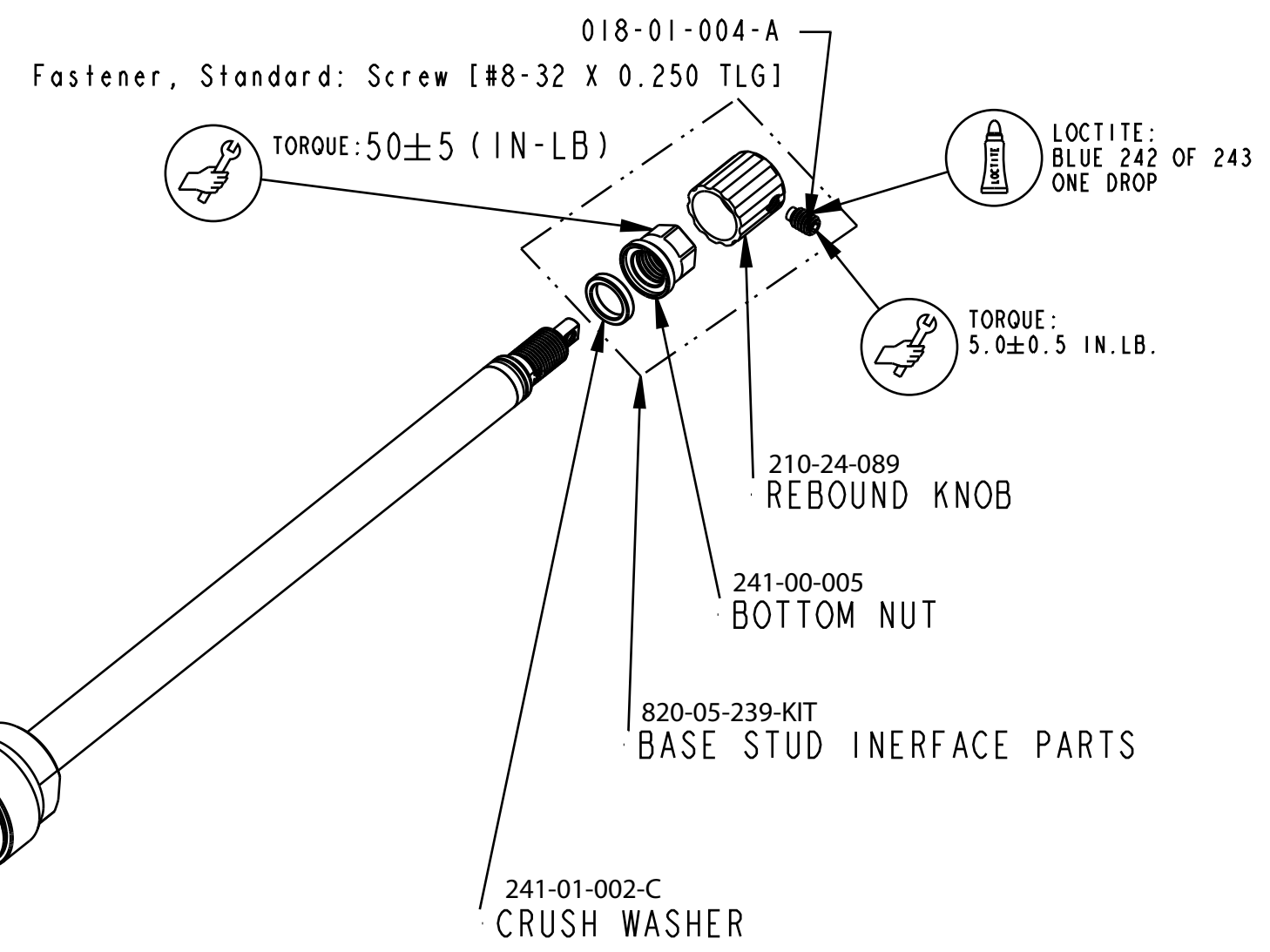


SECTION A-A  
SCALE 0.500



DETAIL A  
SCALE 2.000

IMPORTANT:  
NOTE SEAL ORIENTATION



820-05-237-KIT  
2017 Grip Remote, Topcap Interface Parts

210-24-087  
Cable Pulley Remote, Grip

GREASE:  
THIN LAYER BLUE MARINE GREASE  
ID AND OD

TORQUE:  
1.5±.15 IN.LB.

CARTRIDGE ASSY

TORQUE:  
220±5 IN.LB.

210-24-088  
Damping Adjust Part: Housing, Remote, Hubless, FIT4

039-00-365  
Spring: Torsion 2013 Damper CTD Remote, .048 Square Wire, 0.600 Mean Coil Diam (

002-02-074  
Bearing, External: Glide Ring, Molded, Z-Cut, 20.0 Bore

036-01-044  
Seals: U-Cup, Shore 70A, 2013 CTD-ADJ, Remote Fit-CTD and Remote O/C-CTD

TORQUE:  
4±1 IN.LB.

IMPORTANT:  
DO NOT ALLOW PULLEY  
TO ROTATE WHILE TORQUING

019-01-115  
Fastener Standard (Metric): Screw, Socket Head, M2.5 X 8

019-01-088  
Set Screw [M4x4mm], SST, Cup Point, Patchlock

PROPRIETARY  
THIS DOCUMENT CONTAINS CONFIDENTIAL, PROPRIETARY INFORMATION  
THAT IS FOX PROPERTY. DO NOT DISCLOSE TO OR DUPLICATE  
FOR OTHERS EXCEPT AS AUTHORIZED BY FOX.

**FOX** FOX Factory, Inc. Ph 831-768-1100  
130 Hangar Way, Watsonville, CA 95076 USA Fax 831-768-9312

TITLE  
**Cartridge Assy  
Complete, Grip Remote**

SIZE DWG. NO.  
**C**  
PLOT SCALE 0.75 SHEET 1 OF 1

ProE ASSEM